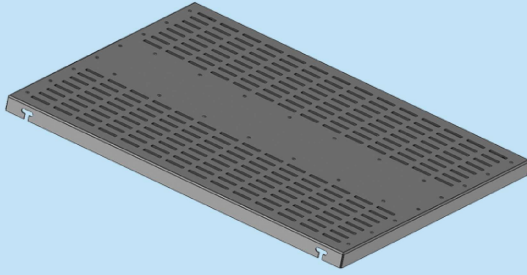
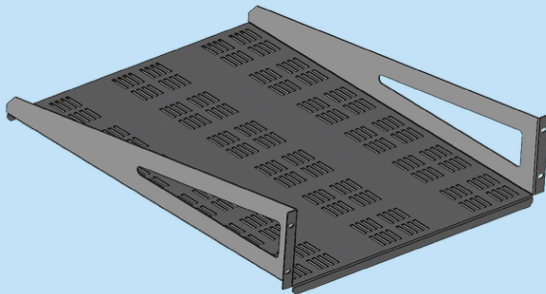


:: FIXED SHELF



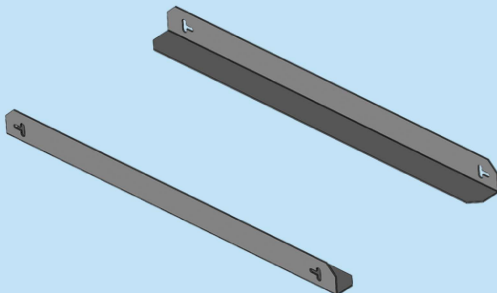
| ORDER NO RAL 9005 | TYPE | DESCRIPTION | DIMENSIONS (H)mm | LOAD CAPACITY (Kg) | THICKNESS | QTY |
|----------------------|---------|-------------|---------------------|-----------------------|-----------|-----|
| 709 101 | 19A FS3 | Fixed Shelf | 300mm | 50 | 1.5mm | 01 |
| 709 103 | 19A FS4 | Fixed Shelf | 400mm | 50 | 1.5mm | 01 |
| 709 105 | 19A FS5 | Fixed Shelf | 500mm | 50 | 1.5mm | 01 |
| 709 107 | 19A FS6 | Fixed Shelf | 600mm | 50 | 1.5mm | 01 |
| 709 109 | 19A FS7 | Fixed Shelf | 700mm | 50 | 2.0mm | 01 |
| 709 111 | 19A FS8 | Fixed Shelf | 800mm | 50 | 2.0mm | 01 |

:: FIXED CANTILEVER SHELF



| ORDER NO RAL 9005 | TYPE | DESCRIPTION | DIMENSIONS Uxmm | LOAD CAPACITY (Kg) | THICKNESS | QTY |
|----------------------|----------|------------------------|--------------------|-----------------------|-----------|-----|
| 709 119 | 19A FCS2 | Fixed Cantilever Shelf | 2Ux200mm | 10 | 1.5mm | 01 |
| 709 121 | 19A FCS3 | Fixed Cantilever Shelf | 2Ux300mm | 15 | 1.5mm | 01 |
| 709 123 | 19A FCS4 | Fixed Cantilever Shelf | 2Ux400mm | 15 | 1.5mm | 01 |
| 709 125 | 19A FCS5 | Fixed Cantilever Shelf | 2Ux500mm | 20 | 1.5mm | 01 |
| 709 127 | 19A FCS6 | Fixed Cantilever Shelf | 3Ux600mm | 25 | 1.5mm | 01 |
| 709 129 | 19A FCS7 | Fixed Cantilever Shelf | 4Ux700mm | 30 | 1.5mm | 01 |
| 709 131 | 19A FCS8 | Fixed Cantilever Shelf | 4Ux800mm | 30 | 1.5mm | 01 |

:: FIXED EQUIPMENT SUPPORTS



| ORDER NO RAL 9005 | TYPE | DESCRIPTION | DIMENSIONS (D)mm | LOAD CAPACITY (Kg) | THICKNESS | QTY |
|----------------------|----------|--------------------------|---------------------|-----------------------|-----------|--------|
| 709 201 | 19A FES3 | Fixed Equipment Supports | 300mm | 50 | 2.0mm | 01 Set |
| 709 203 | 19A FES4 | Fixed Equipment Supports | 400mm | 50 | 2.0mm | 01 Set |
| 709 205 | 19A FES5 | Fixed Equipment Supports | 500mm | 50 | 2.0mm | 01 Set |
| 709 207 | 19A FES6 | Fixed Equipment Supports | 600mm | 50 | 2.0mm | 01 Set |
| 709 209 | 19A FES7 | Fixed Equipment Supports | 700mm | 50 | 2.0mm | 01 Set |
| 709 211 | 19A FES8 | Fixed Equipment Supports | 800mm | 50 | 2.0mm | 01 Set |

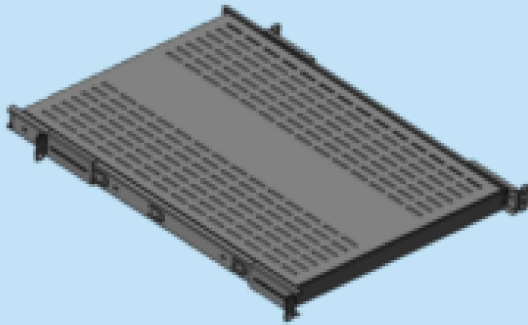
Maximum depth of the Fixed Shelf / Fixed Cantliver Shelf / Fixed Equipment Supports that can be fixed to a rack is; Rack depth-200mm.

eg: for 800mm depth rack: maximum depth of the item that can be fixed is 600mm.

RAL 9005 or any other color on request,subject to MOQ.

| | | | |
|-----------|------------|------------|------------|
| UPDATE ON | 21/03/2023 | REPLACE OF | 30/09/2022 |
|-----------|------------|------------|------------|

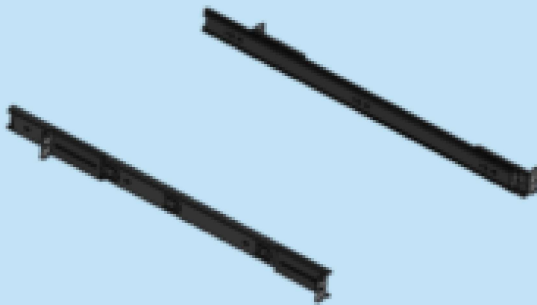
:: SLIDING SHELF



| ORDER NO RAL 9005 | TYPE | DESCRIPTION | DIMENSIONS (H)mm | LOAD (Kg) CAPACITY | THICKNESS | QTY |
|----------------------|------------|-----------------------------|---------------------|-----------------------|-----------|-----|
| 709 141 | 19A SS753 | Sliding Shelf 75% Extended | 300mm | 33 | 1.5mm | 01 |
| 709 143 | 19A SS754 | Sliding Shelf 75% Extended | 400mm | 33 | 1.5mm | 01 |
| 709 145 | 19A SS755 | Sliding Shelf 75% Extended | 500mm | 33 | 1.5mm | 01 |
| 709 147 | 19A SS756 | Sliding Shelf 75% Extended | 600mm | 33 | 1.5mm | 01 |
| 709 149 | 19A SS757 | Sliding Shelf 75% Extended | 700mm | 33 | 2.0mm | 01 |
| 709 151 | 19A SS758 | Sliding Shelf 75% Extended | 800mm | 33 | 2.0mm | 01 |
| 709 161 | 19A SS1003 | Sliding Shelf 100% Extended | 300mm | 24 | 1.5mm | 01 |
| 709 163 | 19A SS1004 | Sliding Shelf 100% Extended | 400mm | 24 | 1.5mm | 01 |
| 709 165 | 19A SS1005 | Sliding Shelf 100% Extended | 500mm | 24 | 1.5mm | 01 |
| 709 167 | 19A SS1006 | Sliding Shelf 100% Extended | 600mm | 24 | 1.5mm | 01 |
| 709 169 | 19A SS1007 | Sliding Shelf 100% Extended | 700mm | 24 | 2.0mm | 01 |
| 709 171 | 19A SS1008 | Sliding Shelf 100% Extended | 800mm | 24 | 2.0mm | 01 |

Material: Mild Steel Zink Plated
RAL 9005 or any other color on request,subject to MOQ.

:: SLIDING EQUIPMENT SUPPORT



| ORDER NO | TYPE | DESCRIPTION | DIMENSIONS (L)mm | LOAD (Kg) CAPACITY | QTY |
|----------|-------------|--|---------------------|-----------------------|-----|
| 709 240 | 19A SES753 | Sliding Equipment Supports 75% Extended | 300mm | 33 | 01 |
| 709 242 | 19A SES754 | Sliding Equipment Supports 75% Extended | 400mm | 33 | 01 |
| 709 244 | 19A SES755 | Sliding Equipment Supports 75% Extended | 500mm | 33 | 01 |
| 709 246 | 19A SES756 | Sliding Equipment Supports 75% Extended | 600mm | 33 | 01 |
| 709 248 | 19A SES757 | Sliding Equipment Supports 75% Extended | 700mm | 33 | 01 |
| 709 250 | 19A SES758 | Sliding Equipment Supports 75% Extended | 800mm | 33 | 01 |
| 709 260 | 19A SES1003 | Sliding Equipment Supports 100% Extended | 300mm | 24 | 01 |
| 709 262 | 19A SES1004 | Sliding Equipment Supports 100% Extended | 400mm | 24 | 01 |
| 709 264 | 19A SES1005 | Sliding Equipment Supports 100% Extended | 500mm | 24 | 01 |
| 709 266 | 19A SES1006 | Sliding Equipment Supports 100% Extended | 600mm | 24 | 01 |
| 709 268 | 19A SES1007 | Sliding Equipment Supports 100% Extended | 700mm | 24 | 01 |
| 709 270 | 19A SES1008 | Sliding Equipment Supports 100% Extended | 800mm | 24 | 01 |

RAL 9005 or any other color on request,subject to MOQ.

| | | | |
|-----------|------------|------------|------------|
| UPDATE ON | 21/03/2023 | REPLACE OF | 30/09/2022 |
|-----------|------------|------------|------------|