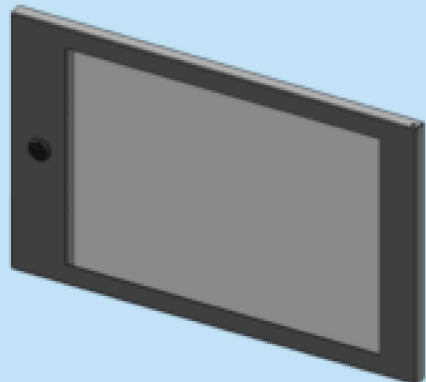


:: 19" WALL MOUNTING RACK GLASS DOOR ANNEALED CLEAR GLASS

ORDER NO RAL 9005 CLEAR GLASS	TYPE	DESCRIPTION	DIMENSIONS (WxH)mm	THICKNESS	QTY
701 593	19WM GDAC62	19" WM Rack - Glass Door - Annealed Clear Glass 3U	600x225mm	0.8mm	01 Set
701 597	19WM GDAC63	19" WM Rack - Glass Door - Annealed Clear Glass 5U	600x300mm	0.8mm	01 Set
701 631	19WM GDAC64	19" WM Rack - Glass Door - Annealed Clear Glass 7U	600x400mm	0.8mm	01 Set
701 636	19WM GDAC65	19" WM Rack - Glass Door - Annealed Clear Glass 9U	600x500mm	0.8mm	01 Set
701 641	19WM GDAC66	19" WM Rack - Glass Door - Annealed Clear Glass 11U	600x600mm	0.8mm	01 Set
701 646	19WM GDAC68	19" WM Rack - Glass Door - Annealed Clear Glass 16U	600x800mm	1.0mm	01 Set
701 651	19WM GDAC610	19" WM Rack - Glass Door - Annealed Clear Glass 20U	600x1000mm	1.0mm	01 Set

Different types of locks are available on request.

RAL 9005 or any other color on request,subject to MOQ.

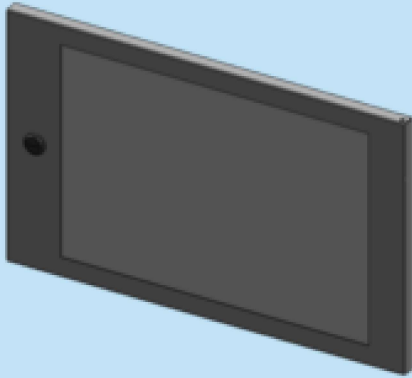


:: 19" WALL MOUNTING RACK GLASS DOOR TEMPERED CLEAR GLASS

ORDER NO RAL 9005 CLEAR GLASS	TYPE	DESCRIPTION	DIMENSIONS (WxH)mm	THICKNESS	QTY
701 601	19WM GDC63	19" WM Rack - Glass Door Tempered Clear Glass 5U	600x300mm	1.2mm	01 Set
701 606	19WM GDC64	19" WM Rack - Glass Door Tempered Clear Glass 7U	600x400mm	1.2mm	01 Set
701 611	19WM GDC65	19" WM Rack - Glass Door Tempered Clear Glass 9U	600x500mm	1.2mm	01 Set
701 616	19WM GDC66	19" WM Rack - Glass Door Tempered Clear Glass 11U	600x600mm	1.2mm	01 Set
701 621	19WM GDC68	19" WM Rack - Glass Door Tempered Clear Glass 16U	600x800mm	1.2mm	01 Set
701 626	19WM GDC610	19" WM Rack - Glass Door Tempered Clear Glass 20U	600x1000mm	1.2mm	01 Set

Different types of locks are available on request.

RAL 9005 or any other color on request,subject to MOQ.

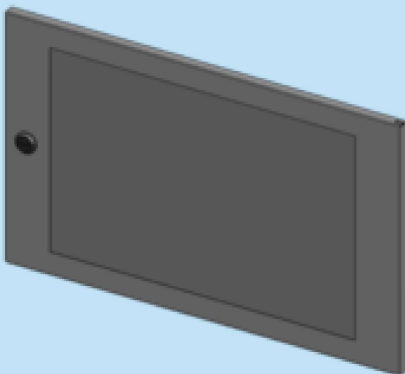


:: 19" WALL MOUNTING RACK GLASS DOOR ANNEALED TINTED GLASS

ORDER NO RAL 9005 TINTED GLASS	TYPE	DESCRIPTION	DIMENSIONS (WxH)mm	THICKNESS	QTY
701 595	19WM GDTT62	19" WM Rack - Glass Door Annealed Tinted Glass 3U	600x225mm	0.8mm	01 Set
701 599	19WM GDTT63	19" WM Rack - Glass Door Annealed Tinted Glass 5U	600x300mm	0.8mm	01 Set
701 633	19WM GDTT64	19" WM Rack - Glass Door Annealed Tinted Glass 7U	600x400mm	0.8mm	01 Set
701 638	19WM GDTT65	19" WM Rack - Glass Door Annealed Tinted Glass 9U	600x500mm	0.8mm	01 Set
701 643	19WM GDTT66	19" WM Rack - Glass Door Annealed Tinted Glass 11U	600x600mm	0.8mm	01 Set
701 648	19WM GDTT68	19" WM Rack - Glass Door Annealed Tinted Glass 16U	600x800mm	1.0mm	01 Set
701 653	19WM GDTT610	19" WM Rack - Glass Door Annealed Tinted Glass 20U	600x1000mm	1.0mm	01 Set

Different types of locks are available on request.

RAL 9005 or any other color on request,subject to MOQ.



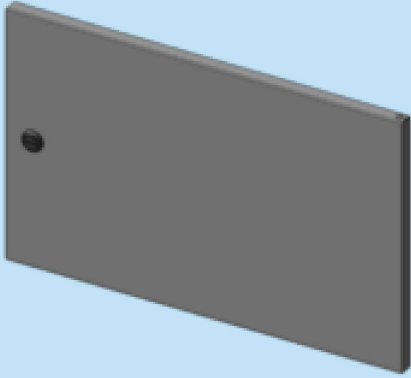
:: 19" WALL MOUNTING RACK GLASS DOOR TEMPERED TINTED GLASS

ORDER NO RAL 9005	TYPE	DESCRIPTION	DIMENSIONS (WxH)mm	THICKNESS	QTY
701 603	19WM GDT63	19" WM Rack - Glass Door Tempered Tinted Glass 3U	600x300mm	1.2mm	01 Set
701 608	19WM GDT64	19" WM Rack - Glass Door Tempered Tinted Glass 5U	600x400mm	1.2mm	01 Set
701 613	19WM GDT65	19" WM Rack - Glass Door Tempered Tinted Glass 7U	600x500mm	1.2mm	01 Set
701 618	19WM GDT66	19" WM Rack - Glass Door Tempered Tinted Glass 11U	600x600mm	1.2mm	01 Set
701 623	19WM GDT68	19" WM Rack - Glass Door Tempered Tinted Glass 16U	600x800mm	1.2mm	01 Set
701 628	19WM GDT610	19" WM Rack - Glass Door Tempered Tinted Glass 20U	600x1000mm	1.2mm	01 Set

Different types of locks are available on request.

RAL 9005 or any other color on request,subject to MOQ.

:: 19" WALL MOUNTING RACK STEEL DOOR ECON

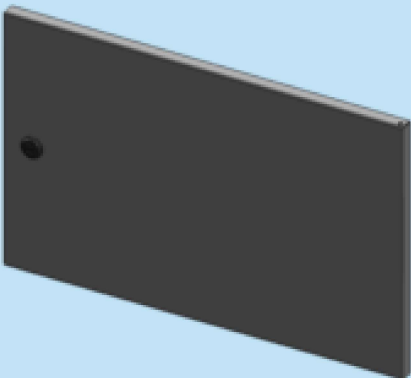


ORDER NO RAL 9005	TYPE	DESCRIPTION	DIMENSIONS (WxH)mm	THICKNESS	QTY
701 697	19WM SD62E	19" WM Rack - Steel Door Econ 3U	600x225mm	0.8mm	01
701 699	19WM SD63E	19" WM Rack - Steel Door Econ 5U	600x300mm	0.8mm	01
701 704	19WM SD64E	19" WM Rack - Steel Door Econ 7U	600x400mm	0.8mm	01
701 709	19WM SD65E	19" WM Rack - Steel Door Econ 9U	600x500mm	0.8mm	01
701 714	19WM SD66E	19" WM Rack - Steel Door Econ 11U	600x600mm	0.8mm	01

Different types of locks are available on request.

RAL 9005 or any other color on request,subject to MOQ.

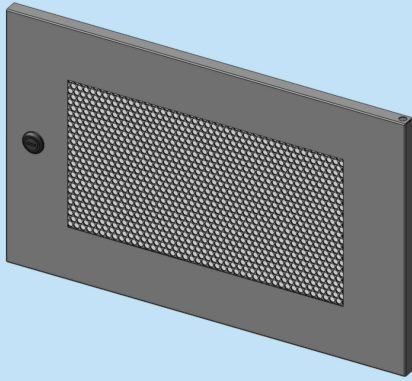
:: 19" WALL MOUNTING RACK STEEL DOOR



ORDER NO RAL 9005	TYPE	DESCRIPTION	DIMENSIONS (WxH)mm	THICKNESS	QTY
701 701	19WM SD63	19" WM Rack - Steel Door 5U	600x300mm	1.2mm	01
701 706	19WM SD64	19" WM Rack - Steel Door 7U	600x400mm	1.2mm	01
701 711	19WM SD65	19" WM Rack - Steel Door 9U	600x500mm	1.2mm	01
701 716	19WM SD66	19" WM Rack - Steel Door 11U	600x600mm	1.2mm	01
701 721	19WM SD68	19" WM Rack - Steel Door 16U	600x800mm	1.2mm	01
701 726	19WM SD610	19" WM Rack - Steel Door 20U	600x1000mm	1.2mm	01

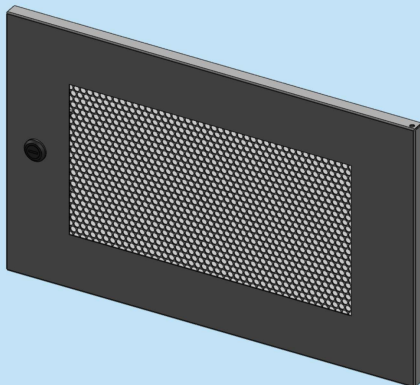
Different types of locks are available on request.

RAL 9005 or any other color on request,subject to MOQ.



:: 19" WALL MOUNTING RACK MESH DOOR ECON

ORDER NO RAL 9005	TYPE	DESCRIPTION	DIMENSIONS (WxH)mm	THICKNESS	QTY
701 797	19WM MD62E	19" WM Rack - Mesh Door Econ 3U	600x225mm	0.8mm	01
701 799	19WM MD63E	19" WM Rack - Mesh Door Econ 5U	600x300mm	0.8mm	01
701 804	19WM MD64E	19" WM Rack - Mesh Door Econ 7U	600x400mm	0.8mm	01
701 809	19WM MD65E	19" WM Rack - Mesh Door Econ 9U	600x500mm	0.8mm	01
701 814	19WM MD66E	19" WM Rack - Mesh Door Econ 11U	600x600mm	0.8mm	01



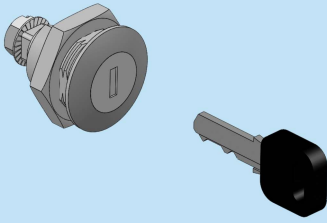
:: 19" WALL MOUNTING RACK MESH DOOR

ORDER NO RAL 9005	TYPE	DESCRIPTION	DIMENSIONS (WxH)mm	THICKNESS	QTY
701 801	19WM MD63	19" WM Rack - Mesh Door 5U	600x300mm	1.2mm	01
701 806	19WM MD64	19" WM Rack - Mesh Door 7U	600x400mm	1.2mm	01
701 811	19WM MD65	19" WM Rack - Mesh Door 9U	600x500mm	1.2mm	01
701 816	19WM MD66	19" WM Rack - Mesh Door 11U	600x600mm	1.2mm	01
701 821	19WM MD68	19" WM Rack - Mesh Door 16U	600x800mm	1.2mm	01
701 826	19WM MD610	19" WM Rack - Mesh Door 20U	600x1000mm	1.2mm	01

Different types of locks are available on request.
RAL 9005 or any other color on request,subject to MOQ..

Mesh Doors are available with staggered round holes, & straight square shape as standard
Many other types of Mesh Door with different open area percentages (0A%), are available on request, subject to MOQ.

:: KEY LOCK



ORDER NO RAL 9005	TYPE	DESCRIPTION	QTY
780 102	KLS	Key Lock - Steel (Keyed Different)	01
780 122	KLP	Key Lock - Polyamide (Keyed Different)	01

Master Key system are available on request.

:: LOCK HANDLE



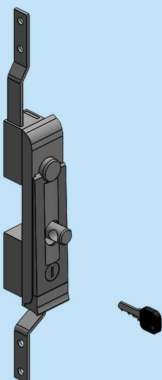
ORDER NO RAL 9005	TYPE	DESCRIPTION	QTY
780 280	LH	Lock Handle	01

:: LOCK BLANKING KIT



ORDER NO RAL 9005	TYPE	DESCRIPTION	QTY
780 281	LBK	Lock Blanking Kit	01

:: SWING HANDLE LOCK



ORDER NO RAL 9005	TYPE	DESCRIPTION	QTY
780 984	SHL3	Swing Handle Lock - Three Position - Keyed different	01
780 986	SHL1	Swing Handle Lock - Single Position - Keyed Different	01

RAL 9005 or any other color on request,subject to MOQ.

UPDATE ON	21/03/2023	REPLACE OF	30/09/2022
-----------	------------	------------	------------