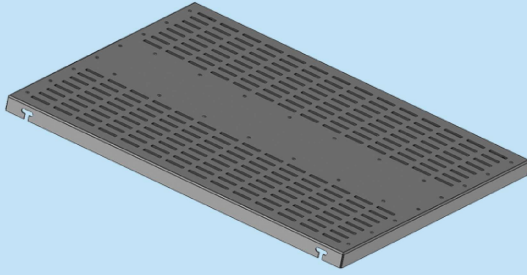
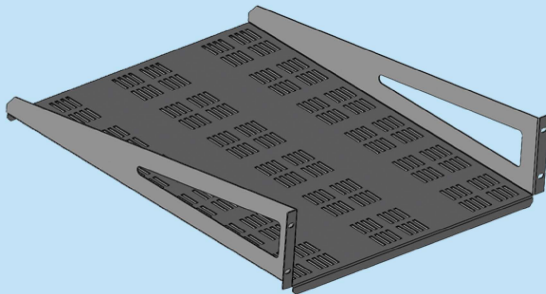


:: FIXED SHELF



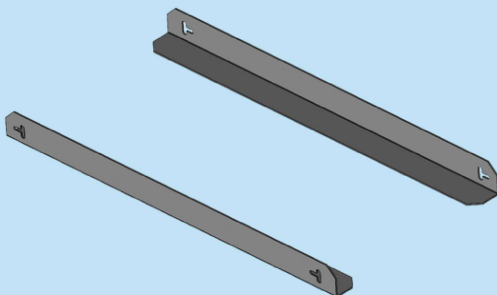
ORDER NO RAL 9005	TYPE	DESCRIPTION	DIMENSIONS (H)mm	LOAD CAPACITY (Kg)	THICKNESS	QTY
709 101	19A FS3	Fixed Shelf	300mm	50	1.5mm	01
709 103	19A FS4	Fixed Shelf	400mm	50	1.5mm	01
709 105	19A FS5	Fixed Shelf	500mm	50	1.5mm	01
709 107	19A FS6	Fixed Shelf	600mm	50	1.5mm	01
709 109	19A FS7	Fixed Shelf	700mm	50	2.0mm	01
709 111	19A FS8	Fixed Shelf	800mm	50	2.0mm	01

:: FIXED CANTILEVER SHELF



ORDER NO RAL 9005	TYPE	DESCRIPTION	DIMENSIONS Uxmm	LOAD CAPACITY (Kg)	THICKNESS	QTY
709 119	19A FCS2	Fixed Cantilever Shelf	2Ux200mm	10	1.5mm	01
709 121	19A FCS3	Fixed Cantilever Shelf	2Ux300mm	15	1.5mm	01
709 123	19A FCS4	Fixed Cantilever Shelf	2Ux400mm	15	1.5mm	01
709 125	19A FCS5	Fixed Cantilever Shelf	2Ux500mm	20	1.5mm	01
709 127	19A FCS6	Fixed Cantilever Shelf	3Ux600mm	25	1.5mm	01
709 129	19A FCS7	Fixed Cantilever Shelf	4Ux700mm	30	1.5mm	01
709 131	19A FCS8	Fixed Cantilever Shelf	4Ux800mm	30	1.5mm	01

:: FIXED EQUIPMENT SUPPORTS



ORDER NO RAL 9005	TYPE	DESCRIPTION	DIMENSIONS (D)mm	LOAD CAPACITY (Kg)	THICKNESS	QTY
709 201	19A FES3	Fixed Equipment Supports	300mm	50	2.0mm	01 Set
709 203	19A FES4	Fixed Equipment Supports	400mm	50	2.0mm	01 Set
709 205	19A FES5	Fixed Equipment Supports	500mm	50	2.0mm	01 Set
709 207	19A FES6	Fixed Equipment Supports	600mm	50	2.0mm	01 Set
709 209	19A FES7	Fixed Equipment Supports	700mm	50	2.0mm	01 Set
709 211	19A FES8	Fixed Equipment Supports	800mm	50	2.0mm	01 Set

Maximum depth of the Fixed Shelf / Fixed Cantliver Shelf / Fixed Equipment Supports that can be fixed to a rack is; Rack depth-200mm.

eg: for 800mm depth rack: maximum depth of the item that can be fixed is 600mm.

RAL 9005 or any other color on request,subject to MOQ.

UPDATE ON	21/03/2023	REPLACE OF	30/09/2022
-----------	------------	------------	------------