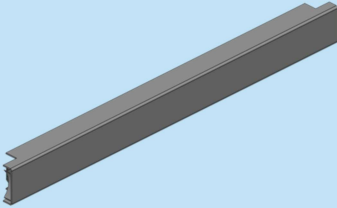


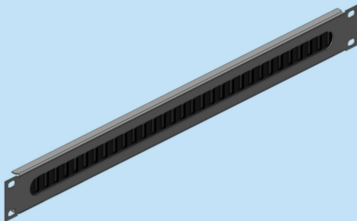
:: 19" FRONT PLATE - STEEL SOLID PLATE WITHOUT BEND

ORDER NO RAL 9005	TYPE	DESCRIPTION	THICKNESS	QTY
709 586	19A 19FPSSB1U	19" Front Plate - Steel Solid Plate without Bend 1U	1.5mm	01
709 587	19A 19FPSSB2U	19" Front Plate - Steel Solid Plate without Bend 2U	1.5mm	01



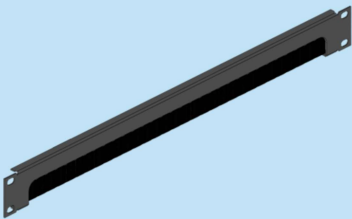
:: 19" FRONT PLATE - PLASTIC - CLIP TYPE

ORDER NO RAL 9005	TYPE	DESCRIPTION	QTY
709 570	19A 19FPPC1U	19" Front Plate - Plastic - Clip Type 1U	01
709 571	19A 19FPPC2U	19" Front Plate - Plastic - Clip Type 2U	01



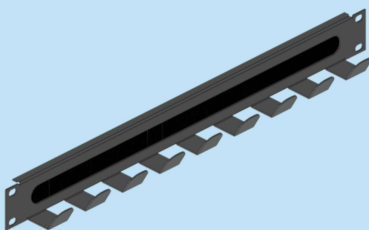
:: 19" FRONT PLATE - STEEL WITH BRUSH - MIDDLE OPANING

ORDER NO RAL 9005	TYPE	DESCRIPTION	THICKNESS	QTY
709 620	19A 19FPSBM1U	19" Front Plate - Steel with Brush - Middle Opaning 1U	1.2mm	01



:: 19" FRONT PLATE - STEEL WITH BRUSH - SIDE OPANING

ORDER NO RAL 9005	TYPE	DESCRIPTION	THICKNESS	QTY
709 621	19A 19FPSBS1U	19" Front Plate - Steel with Brush - Side Opaning 1U	1.2mm	01



:: 19" FRONT PLATE - STEEL WITH BRUSH & BACK WIRE GUILD

ORDER NO RAL 9005	TYPE	DESCRIPTION	THICKNESS	QTY
709 622	19A 19FPSBW1U	19" Front Plate - Steel with Brush & Back Wire Guild 1U	1.2mm	01

RAL 9005 or any other color on request,subject to MOQ.

UPDATE ON	21/03/2023	REPLACE OF	30/09/2022
-----------	------------	------------	------------