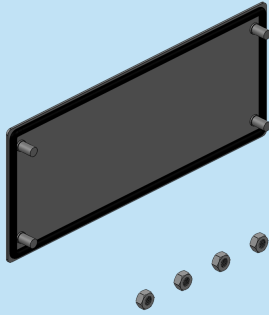
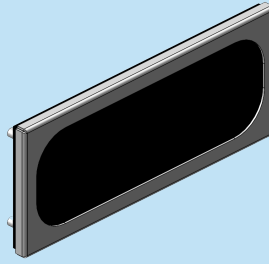


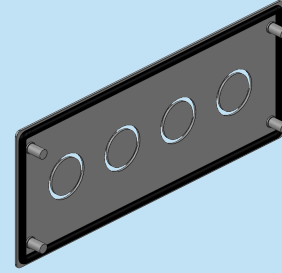
## :: GLAND PLATE



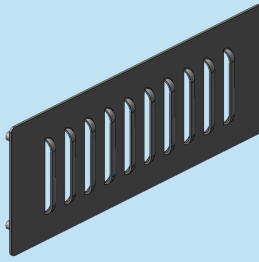
SGFL



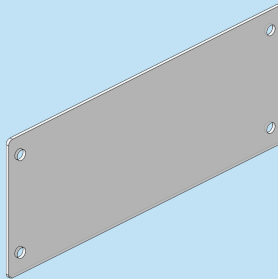
SEGFL



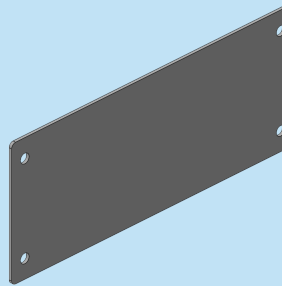
KGFL



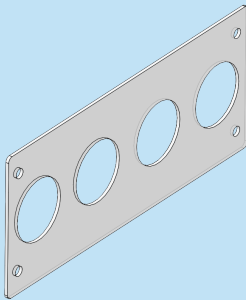
LGFL



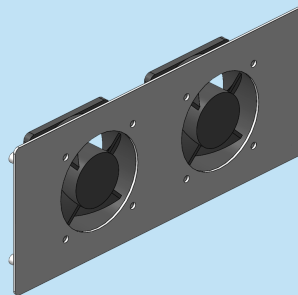
PCGFL



ALGFL



PCGPPFL



FGPFL

ORDER NO	TYPE	DESCRIPTION	DIMENSIONS (WxH)mm	THICKNESS	QTY
723 121	SGFL-13	Steel Gland FL13 (With Stud)	134x47	1.2mm	01
723 111	SGFL-21	Steel Gland FL21 (With Stud)	214x88	1.5mm	01
723 146	SEGFL-13	Self Sealing Gland FL13 (With Stud)	134x47	1.5mm	01
723 144	SEGFL-21	Self Sealing Gland FL21 (With Stud)	214x88	1.5mm	01
723 138	KGFL-13	Knockout Gland FL13 (With Stud)	134x47	1.2mm	01
723 137	KGFL-21	Knockout Gland FL21 (With Stud)	214x88	1.5mm	01
723 156	LGFL-13	Louver Gland FL13 (With Stud)	134x47	1.2mm	01
723 154	LGFL-21	Louver Gland FL21 (With Stud)	214x88	1.5mm	01
723 181	PCGFL-13	Polycarbonate Gland FL13	134x47	2.0mm	01
723 180	PCGFL-21	Polycarbonate Gland FL21	214x88	2.0mm	01
723 191	ALGFL-13	Aluminium Gland FL13	134x47	2.0mm	01
723 190	ALGFL-21	Aluminium Gland FL21	214x88	2.0mm	01
723 183	PCGPPFL-13	Polycarbonate Gland Pre Punched FL13	134x47	2.0mm	01
723 182	PCGPPFL-21	Polycarbonate Gland Pre Punched FL21	214x88	2.0mm	01
724 170	FGPFL-21	Fan Plate FL21	220x92	1.5mm	01