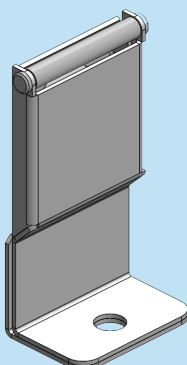


ORDER NO	TYPE	DESCRIPTION	QTY
780 200	QTL	Quarter Turn Lock - Double Bit 3mm - Steel	01
780 210	QTL	Quarter Turn Lock - Double Bit 3mm - Polyamide	01
780 202	QTL	Quarter Turn Lock - Square 8mm - Steel	01
780 212	QTL	Quarter Turn Lock - Square 8mm - Polyamide	01
780 204	QTL	Quarter Turn Lock - Triangular 8mm - Steel	01
780 214	QTL	Quarter Turn Lock - Triangular 8mm - Polyamide	01
780 100	KL	Key Lock - Steel (Keyde Alike)	01
780 120	KL	Key Lock - Polyamide (Keyde Alike)	01
780 102	KL	Key Lock - Steel (Keyde Different)	01
780 122	KL	Key Lock - Polyamide (Keyde Different)	01
780 130	THL	T Handle Lock - Steel (Non Locking)	01
780 140	THL	T Handle Lock - Polyamide (Non Locking)	01
780 132	THL	T Handle Lock - Steel (Keyde Alike)	01
780 142	THL	T Handle Lock - Polyamide (Keyde Alike)	01
780 134	THL	T Handle Lock - Steel (Keyde Different)	01
780 144	THL	T Handle Lock - Polyamide (Keyde Different)	01
780 220	KBL	Knob Lock - Steel (Non Locking)	01
780 230	KBL	Knob Lock - Polyamide (Non Locking)	01
780 222	KBL	Knob Lock - Steel (Keyde Alike)	01
780 232	KBL	Knob Lock - Polyamide (Keyde Alike)	01
780 224	KBL	Knob Lock - Steel (Keyed Different)	01
780 234	KBL	Knob Lock - Polyamide (Keyed Different)	01
780 260	KP	Key - Double BIT 3mm - Plastic	01
780 261	KP	Key - Triangular 8mm - Plastic	01
780 262	KP	Key - Square 8mm - Plastic	01
780 270	KZDC	Key - Double BIT 3mm - Zinc Die Cast	01
780 271	KZDC	Key - Triangular 8mm - Zinc Die Cast	01
780 272	KZDC	Key - Square 8mm - Zinc Die Cast	01
780 280	LH	Lock Handle	01


:: LOCK COVER KIT

ORDER NO	TYPE	DESCRIPTION	THICKNESS	QTY
780 610	LCK	Lock Cover Kit	1.2mm	01