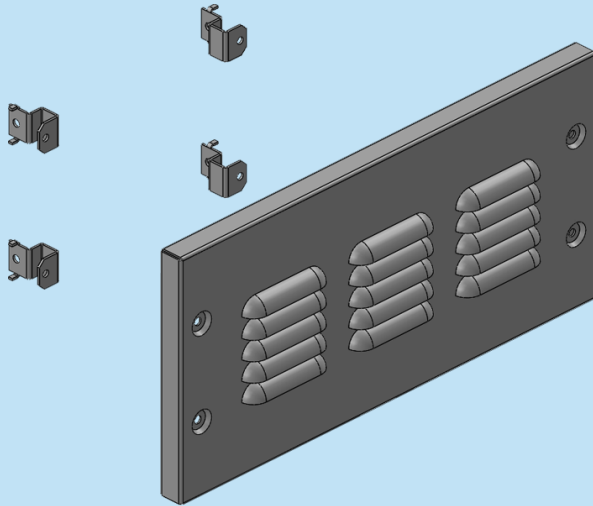


❖ LOUVER COVER - WITH STEEL LOUVER



ORDER NO Standard Duty Thickness 1.5mm	ORDER NO Heavy Duty Thickness 2.0mm	TYPE	DESCRIPTION	MODULE SIZE	DIMENSIONS (WxHxD)mm	QTY
815 750	815 751	LC 1.1	Louver Cover - With Steel Louver	1Mx1M	208x208x22mm	01
815 752	815 753	LC 1.1.5	Louver Cover - With Steel Louver	1Mx1.5M	208x318x22mm	01
815 754	815 755	LC 1.2	Louver Cover - With Steel Louver	1Mx2M	208x428x22mm	01
815 760	815 761	LC 2.1	Louver Cover - With Steel Louver	2Mx1M	428x208x22mm	01
815 762	815 763	LC 2.1.5	Louver Cover - With Steel Louver	2Mx1.5M	428x318x22mm	01
815 764	815 765	LPC 2.2	Louver Cover - With Steel Louver	2Mx2M	428x428x22mm	01
815 770	815 771	LC 3.1	Louver Cover - With Steel Louver	3Mx2M	648x208x22mm	01
815 772	815 773	LC 3.1.5	Louver Cover - With Steel Louver	3Mx1.5M	648x318x22mm	01
815 774	815 775	LC 3.2	Louver Cover - With Steel Louver	3Mx2M	648x428x22mm	01
815 780	815 781	LC 4.1	Louver Cover - With Steel Louver	4Mx1M	868x208x22mm	01
815 782	815 783	LC 4.1.5	Louver Cover - With Steel Louver	4Mx1.5M	868x318x22mm	01
815 784	815 785	LC 4.2	Louver Cover - With Steel Louver	4Mx2M	868x428x22mm	01