

ELECTRICAL ENCLOSURES



INTRODUCTION

TIMIK is a Canadian company design & manufacture TIMIK Modular Panel System, Electrical Enclosures, Custom Design Enclosures and 19" Racks & Data Center Solutions and export to many countries around the world.

TIMIK products are manufactured in an ultra-modern production plant located in Sri Lanka installed with high tech machines, CNC machines & robots.

Our Research & Development team with many years of R&D experiences continuously develop products to be the best in the market using best technologies available in the world.

Our highly skilled, well trained & motivated work force, backed by committed & quality conscious management, manufacture high quality products at minimum lead time at lowest possible cost.

The commitment, investment and continuous R&D, make us in the forefront in the enclosure industry with best technical solutions.

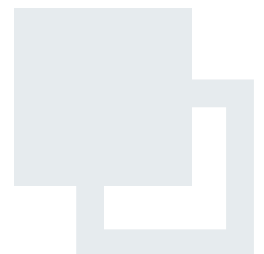
TIMIK Range of Products

- Modular Panels
- Wall Mounting Box Enclosures
- Distribution Boards (Heavy Duty & Light Duty & Australian & New Zealand Type)
- Terminal Boxes
- Stainless Steel Enclosures
- Stainless Steel Terminal Boxes
- 19" Racks & Data Center Solutions

TIMIK Modular Panel System, Electrical Enclosures, 19" Racks and Data Center Solutions are manufactured according to relevant international standards and practices.

TIMIK Modular Panel System & Electrical Enclosures are designed and manufactured according to IEC 61439 - 1 & 2 & 3, AS/NZS 61439 - 1 & 2 & 3, IEC 60529, IEC 62208 and UL 50 standards.

19" Racks & Data Center Solutions are designed and manufactured according to IEC 60297, ISO/ IEC 22237, UL 2416, UL 2755, EIA-310-D, IEC 60917, IEC 62208 standards.



TIMIK MODULAR PANELS

TIMIK Modular Panel System is based on the modular concept of 220mm "Standard Module" for the construction of electrical panels. TIMIK "Standard Module" can be extended into X, Y & Z or width, height & depth directions in multiplication of "Standard Module". With this versatile modular concept, It is possible to construct electrical panels of any design, any configuration, or any size, using the range of standard modular parts.

The versatility of the modular system makes it easier to design and faster to assemble, electrical panels with end-less possibilities. TIMIK Modular Panel System can be modified or extended, as per design changes during the panel assembly, during panel building or, even after commissioning; due to standard modular parts and it's bolted construction.



Structure

Structure is made of four fold bended 2.0mm profiles, which can take heavy loads of switchboards. TIMIK Modular Panel System enables a large panel to separate as "Transport Units" and joint together at the site to make the complete panel.



Busbars

Busbars can be arranged in the X, Y planes or in the Z plane. This allows the ultimate flexibility in designing busbar chambers in the TIMIK Modular Panel System.

TIMIK busbars are run as twin bars in arrangement of "Twin - Parallel" method. This system facilitates busbar tapping for out-going feeders without drilling holes on busbars.

This facilitate heat removal from busbars due to larger skin area for heat dissipation by convection. Better heat removal increases the current carrying capacity of busbars.

Main busbars can place horizontally on the top, middle or bottom level. Vertical droppers can place to access from front or rear of the switchboard.

TIMIK MODULAR PANELS



Inserts & Partitions

Different types of inserts such as fixed type compartments, mounting plates and many other switchgear mounting arrangements can be mixed within the same assembly or section.

An extensive range of standard parts offers complete freedom in designing panels to internal separation from Form 1 to Form 4B as per IEC 61439 1&2 standards. TIMIK range includes fixed compartment units, removable units, fully withdrawable units for design and build of panels of any configuration.

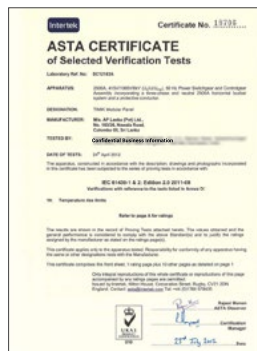


Doors & Covers

Doors & Covers are made of 1.2, 1.5 or 2.0mm EG (Electro Galvanized) steel.

TIMIK products are Epoxy Polyester powder coated by fully automated powder coating plant to the highest quality. Doors & Covers are fitted with PU-FIP (Polyurethane Form-in-Place) seamless gasket to give required IP protection.

All these make the TIMIK one of the best quality Modular Panel System in the world today.



ASTA Type Test Certificate 2500A



ASTA Type Test Certificate 2500A

TIMIK WALL MOUNTING BOX ENCLOSURES

TIMIK Wall Mounting Enclosures are made of 1.2, 1.5mm EG (Electro Galvanized) steel sheets to give additional protection against corrosion by Zinc layer.



- 01** Powder coated in epoxy polyester fine texture.
- 02** Mounting plate is made of 2.0mm Alu-Zinc (Zinc-Alume).
- 03** Mounting plate is fixed with studs. No bolts are penetrated outside. (For better strength and to maintain the IP rating).
- 04** Gland plate is fixed with studs and no screws are penetrated outside. This is to maintain the IP rating and for better quality. Gland opening is recessed and closed with gland plate and sealed with PU-FIP seamless gasket to maintain the IP rating. Many types of gland plates are available on request.
- 05** Back embossed with a rib in four sides for extra strength. Back plate is recessed.
- 06** Wall mounting box enclosures can fix onto the wall using four holes on the back plate or can use wall mounting brackets available as an optional item.
- 07** Door can be fixed to left or right hand side & Door opens 120 degrees. Extra holes are covered with plastic plugs to maintain the IP rating.
- 08** Die casted concealed hinges are used for better strength.
- 09** Door locks are quarter turn common key lock. Many other types of locks are available as optional items.
- 10** Stud welded earth studs on door and cabin for earthing.
- 11** Door is fitted with Polyurethane Form-in-Place (PU-FIP) seamless gasket to maintain IP rating.
- 12** Provisions to fix many auxiliary items like front plates, MCCB modules, DIN modules N&E link modules, blank plates etc.

Wall mounting enclosures with many standard accessories give many solutions for distribution boards and other electrical assemblies. Available in many different sizes to meet the requirement ranging from 200x200x150mm to 800x1600x300mm.

TIMIK wall mounting enclosures are tested for IP 65, Corrosion Resistance & Impact Resistance at UKAS accredited laboratory in the UK.



IP 65 Test Certificate



Impact Resistance - IK08 Test Certificate



Corrosion Resistance - Salt Mist Spray 200hrs Test Certificate

TIMIK DISTRIBUTION BOARDS

Distribution Boards - Heavy Duty

TIMIK Heavy Duty Distribution Boards consist of box cabin, front door with locks, cable gland plates on top & bottom, front plates, DIN rails, earth & neutral links.

Heavy Duty Distribution Board range comes in 1 to 4 rows & 8,12,15 & 18 ways per row. Available in surface mounting type and can flush mount using flush frame. Heavy Duty Distribution Board range is user friendly design. All DIN modules are removable & come with separate front plates.

TIMIK Heavy Duty Distribution Boards are tested for IP 65, resistance for corrosion (Salt mist spray 200hrs) & resistance to impact (IK 08) at UKAS accredited laboratory in the UK.

Provisions to fix door left or right hand side, 120 degree opening.

Mounting plate for MCCB and can be adjustable in depth to accommodate different brands of MCCBs.

Glass doors are available on request.


Distribution Boards - Light Duty

TIMIK Light Duty Distribution Boards consist of box cabin, door with press lock, front plate, removable cable gland plates on top & bottom, DIN rails, earth & neutral links.

Heavy Duty DB range comes in 1 to 4 rows & 8,12,15 & 18 ways per row. Available in surface mounting type and flush mounting type.

TIMIK DISTRIBUTION BOARDS



| Distribution Boards - Australia & New Zealand Type

TIMIK Australian/ New Zealand type Distribution Boards provide safe, flexible solutions through high quality & innovative designs.

TIMIK Australian/ New Zealand type Distribution Boards are available in different types & designs for different applications.

Indoor Distribution Board types

- Basic
- Standard
- Premium

Outdoor Distribution Board types

- Hard
- Tough

Stainless Steel Distribution Board types

- SS Premium
- SS Tough

Distribution Boards are available in IP 43, IP 65 & IP 66 types. Made of EG (Electro Galvanized) steel and Stainless steel grades AISI 304 & 316. PAN busbars of 250A, incomer of switch disconnecter or MCCB and outgoing are from 12 way to 96 ways.

TIMIK Australian/ New Zealand type Distribution Boards are AS/NZS 61439-3 compliant and optimize operational performance, save space and enhance safety.

Custom designs can supply on request.

TIMIK Distribution Boards provide quick and easy installation, safety and reliability in electrical installations for commercial and residential building applications.



TIMIK TERMINAL BOXES

TIMIK Terminal Box consists of cabin, lid fix by screws & profile for equipment mounting.

Lid with PU Form-in-Place (FIP) seamless gasket gives required IP rating.

TIMIK Terminal Boxes are available in different sizes & depths to select as per requirements.


TIMIK STAINLESS STEEL ENCLOSURES

TIMIK Stainless Steel Enclosure consists of cabin, front door with locks and mounting plate. TIMIK Stainless Steel Enclosure is a fully welded design, without any seam, to give high level protection.

TIMIK high quality stainless steel enclosures with hair line finish and tested for IP 66 at UL Laboratory.

Door is fitted with Polyurethane Form-in-Place (PU-FIP) seamless gasket to maintain IP rating.

All accessories including hinges, locks and fasteners are stainless steel.

TIMIK Stainless Steel Enclosures are available in stainless steel grades AISI 304 & AISI 316.

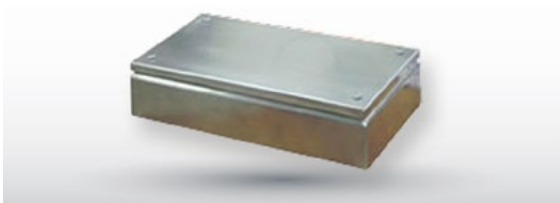

TIMIK STAINLESS STEEL TERMINAL BOXES

TIMIK Stainless Steel Terminal Box consists of cabin, lid fix by screws & profile for equipment mounting.

TIMIK Stainless Steel Terminal Boxes are available in stainless steel grades AISI 304 & AISI 316.

Lid with PU Form-in-Place (FIP) seamless gasket gives required IP rating.

TIMIK Stainless Steel Terminal Boxes come in different sizes with hair line finish.



TIMIK STAINLESS STEEL FREE STANDING ENCLOSURES



TIMIK Stainless Steel Free Standing Enclosure range is welded construction to give required IP rating.

It comes with internal modular grid in width, height & depth to accommodate different accessories to make required mounting solutions.

Standard accessories are used to segregate the panels as per forms of separation as per IEC 61439- 1&2.

All accessories including hinges, locks and fasteners are stainless steel.

TIMIK Stainless Steel Free Standing Enclosures are available in stainless steel grades AISI 304 & AISI 316 and with hair line finish.

TIMIK CUSTOM MADE ENCLOSURES

Every industry needs custom designed bespoke enclosures.

Our well-experienced team of Research & Development (R&D) engineers can design special enclosures as per customer requirements.

Our state of the art manufacturing facility backed by well trained skilled workforce delivers high quality enclosures made to customer designs.

Customized products can manufacture in Electro Galvanized (EG), Stainless Steel (SS), Zinalume (Alu Zinc), Aluminum & HDG (Hot Dipped Galvanized) materials.



Technical Specifications

Technical Specifications of TIMIK Modular Panels

Standards:

Designed and manufactured according to

IEC 61439 -1&2, BSEN 61439 -1&2, AS/NZ 61439 -1&2:2016
IEC 60529:1989, BS EN 60529 standards

IEC – International Electrotechnical Commission
BS EN - British Standards European Norm
AU/NZS - Australian/New Zealand Standard

Electrical Specifications:

Rated operational voltage (Ue)	415V AC
Rated Insulation voltage (Ui)	1000V AC
Rated frequency	50-60 Hz

General Specifications:

Installation:	Indoor
Mounting:	Free Standing
Degree of protection:	IP 55
Internal separation:	Form 1 - Form 4B Type 7

Material Specifications:

Please refer catalog to get material specifications of specific item

Technical Specifications of TIMIK Wall Mounting Enclosures

Standards:

Designed and manufactured according to

IEC 61439 -3, BSEN 61439 -3, AS/NZ 61439 -3 :2016,
IEC 62208, IEC 60529:1989, BS EN 60529 standards

IEC – International Electrotechnical Commission
BS EN - British Standards European Norm
AU/NZS - Australian/New Zealand Standard

Electrical Specifications:

Rated operational voltage (Ue)	415V AC
Rated Insulation voltage (Ui)	1000V AC
Rated frequency	50-60 Hz

General Specifications:

Wall Mounting Box Enclosures

Installation:	Indoor
Mounting:	Wall Mounting / Pole Mounting
Degree of protection:	IP 65
Resistance to corrosion:	Severity Test A / 200 hours constant exposure
Mechanical impact:	IK 08

Distribution Boards - Heavy Duty

Installation:	Indoor
Mounting:	Wall Mounting / Pole Mounting
Degree of protection:	IP 65
Resistance to corrosion:	Severity Test A / 200 hours constant exposure
Mechanical impact:	IK 08

Technical Specifications

Distribution Boards - Light Duty

Installation:	Indoor
Mounting:	Wall Mounting
Resistance to corrosion:	Severity Test A

Distribution Boards - Australia / New Zealand Type

Distribution Boards AU/NZ Type - Indoor

Installation:	Indoor
Mounting:	Wall Mounting
Degree of protection:	IP 43 / IP 65
Resistance to corrosion:	Severity Test A
Mechanical impact:	IK 08

Distribution Boards AU/NZ Type - Outdoor

Installation:	Outdoor
Mounting:	Wall Mounting
Degree of protection:	IP 65
Resistance to corrosion:	Severity Test B
Mechanical impact:	IK 08

Terminal Boxes

Installation:	Indoor
Mounting:	Wall Mounting
Degree of protection:	IP 55
Resistance to corrosion:	Severity Test A

Stainless Steel Enclosures

Installation:	Indoor / Outdoor
Mounting:	Wall Mounting / Pole Mounting
Degree of protection:	IP 66

Please refer catalog to get paint specifications of specific item

Colors:



RAL 7035



RAL 9005



RAL 9010



RAL 2008 | Electric Orange X15

other colors on request.

Products, Designs & Technical Specifications, given in this catalogue may be changed without prior notice.

Designs of items given in this catalogues are property of TIMIK Enclosures.

All design and manufacturing rights reserved.

Technical Specifications of other types of Wall Mounting Enclosures on request.

Copy right reserved 2024

Stainless Steel Terminal Boxes

Installation:	Indoor / Outdoor
Mounting:	Wall Mounting
Degree of protection:	IP 55

Material Specifications:

Please refer catalog to get material specifications of specific item.

Paint Specifications:

Type:	Powder coated
Powder:	Epoxy Polyester powder
Powder coating thickness:	60-80 µm
Gloss Level:	Semi-Gloss 50-70%
Texture:	Fine texture
Curing Temperature:	180 °C
Painting system:	Conveyorised automated powder coating process
Pre-treatment process:	1: Degreasing / Derusting / Cleaning 2: Water cleansing 3: Phosphating
Pre-heating:	IR (Infra Red) heaters
Powder coating:	Tribo static powder coating system
Curing:	IR (Infra Red) heaters

TIMIK RANGE OF PRODUCTS

Electrical Panels & Enclosures

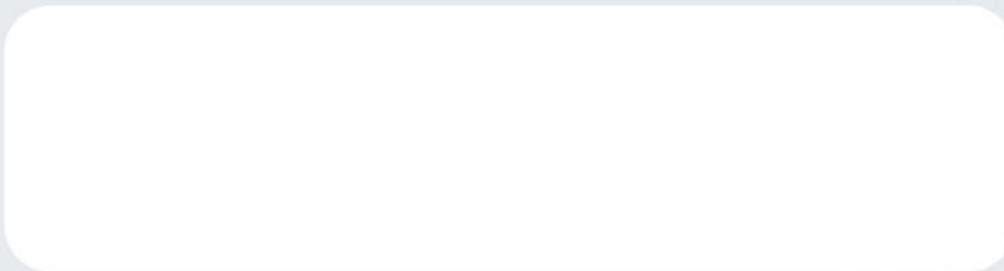
- Modular Panels
- Wall Mounting Box Enclosures
- Distribution Boards
- Terminal Boxes
- Stainless Steel Enclosures
- Stainless Steel Terminal Boxes

19" Racks & Data Center Solutions

- Free Standing 19" Racks
- Wall Mounting 19" Racks & 19" Frames
- Compartment 19" Racks
- Two Posts & Four Posts open 19" Racks
- Outdoor 19" Racks
- Data Center 19" Racks (DATCET Racks)
- Data Center Solutions
- Accessories for 19" Racks



Scan to Download
e-Catalog



AUSTRALIA

CANADA

HONG KONG

SRI LANKA


UK



Scan the QR code
to visit website

ELECTRICAL ENCLOSURES & 19" RACKS

 **TIMIK Enclosures Canada Inc**
Suite 400, Plaza 3, 2000 Argentinia Rd,
Mississauga, ON, L5N 1V9,
Canada.

 **Production Plant:**
No. 416/5, Leyland Road,
Panagoda, Homagama,
Sri Lanka.

 info@timikenclosures.com

 www.timikenclosures.com

© 03/2024