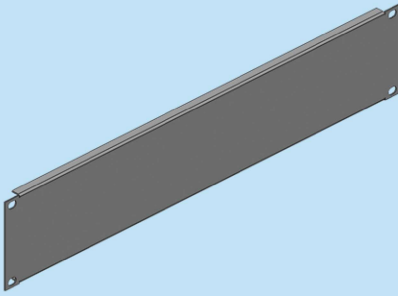
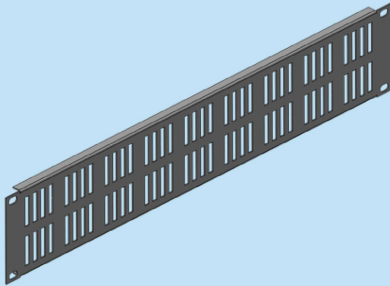


:: FRONT PLATE - STEEL SOLID



| ORDER NO RAL 9005 | TYPE | DESCRIPTION | DIMENSIONS (U) | THICKNESS | QTY |
|----------------------|--------------|-----------------------------------|-------------------|-----------|-----|
| 709 580 | 19A 19FPSS1U | 19" Front Plate - Steel Solid | 1U | 1.2mm | 01 |
| 709 581 | 19A 19FPSS2U | 19" Front Plate - Steel Solid | 2U | 1.2mm | 01 |
| 709 582 | 19A 19FPSS3U | 19" Front Plate - Steel Solid | 3U | 1.2mm | 01 |
| 709 583 | 19A 19FPSS4U | 19" Front Plate - Steel Solid | 4U | 1.2mm | 01 |
| 709 584 | 19A 19FPSS5U | 19" Front Plate - Steel Solid | 5U | 1.2mm | 01 |
| 709 590 | 19A 19FPAS1U | 19" Front Plate - Aluminium Solid | 1U | 3.0mm | 01 |
| 709 591 | 19A 19FPAS2U | 19" Front Plate - Aluminium Solid | 2U | 3.0mm | 01 |
| 709 592 | 19A 19FPAS3U | 19" Front Plate - Aluminium Solid | 3U | 3.0mm | 01 |
| 709 593 | 19A 19FPAS4U | 19" Front Plate - Aluminium Solid | 4U | 3.0mm | 01 |
| 709 594 | 19A 19FPAS5U | 19" Front Plate - Aluminium Solid | 5U | 3.0mm | 01 |

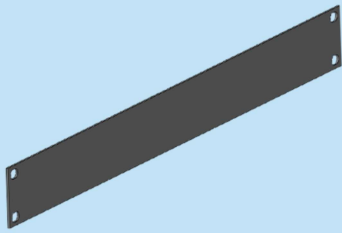
:: FRONT PLATE - STEEL GRILL



| ORDER NO RAL 9005 | TYPE | DESCRIPTION | DIMENSIONS (U) | THICKNESS | QTY |
|----------------------|--------------|-----------------------------------|-------------------|-----------|-----|
| 709 600 | 19A 19FPSG1U | 19" Front Plate - Steel Grill | 1U | 1.2mm | 01 |
| 709 601 | 19A 19FPSG2U | 19" Front Plate - Steel Grill | 2U | 1.2mm | 01 |
| 709 602 | 19A 19FPSG3U | 19" Front Plate - Steel Grill | 3U | 1.2mm | 01 |
| 709 603 | 19A 19FPSG4U | 19" Front Plate - Steel Grill | 4U | 1.2mm | 01 |
| 709 604 | 19A 19FPSG5U | 19" Front Plate - Steel Grill | 5U | 1.2mm | 01 |
| 709 610 | 19A 19FPAG1U | 19" Front Plate - Aluminium Grill | 1U | 3.0mm | 01 |
| 709 611 | 19A 19FPAG2U | 19" Front Plate - Aluminium Grill | 2U | 3.0mm | 01 |
| 709 612 | 19A 19FPAG3U | 19" Front Plate - Aluminium Grill | 3U | 3.0mm | 01 |
| 709 613 | 19A 19FPAG4U | 19" Front Plate - Aluminium Grill | 4U | 3.0mm | 01 |
| 709 614 | 19A 19FPAG5U | 19" Front Plate - Aluminium Grill | 5U | 3.0mm | 01 |

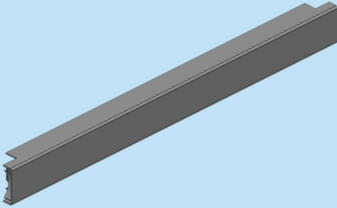
Please refer Technical Specification section for Digital LCD Thermometer technical details.

Color : RAL 9005 with White color Digital LCD Thermometer ; Black (RAL9005) with Black color Digital LCD Thermometer.
RAL 9005 or any other color on request,subject to MOQ.



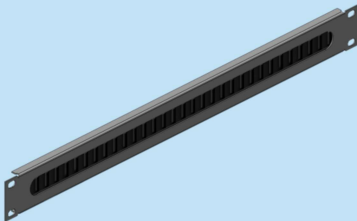
:: 19" FRONT PLATE - STEEL SOLID PLATE WITHOUT BEND

| ORDER NO RAL 9005 | TYPE | DESCRIPTION | THICKNESS | QTY |
|----------------------|---------------|---|-----------|-----|
| 709 586 | 19A 19FPSSB1U | 19" Front Plate - Steel Solid Plate without Bend 1U | 1.5mm | 01 |
| 709 587 | 19A 19FPSSB2U | 19" Front Plate - Steel Solid Plate without Bend 2U | 1.5mm | 01 |



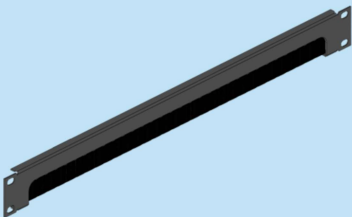
:: 19" FRONT PLATE - PLASTIC - CLIP TYPE

| ORDER NO RAL 9005 | TYPE | DESCRIPTION | QTY |
|----------------------|--------------|--|-----|
| 709 570 | 19A 19FPCC1U | 19" Front Plate - Plastic - Clip Type 1U | 01 |
| 709 571 | 19A 19FPCC2U | 19" Front Plate - Plastic - Clip Type 2U | 01 |



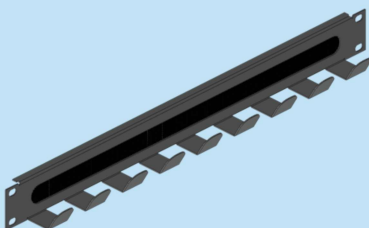
:: 19" FRONT PLATE - STEEL WITH BRUSH - MIDDLE OPANING

| ORDER NO RAL 9005 | TYPE | DESCRIPTION | THICKNESS | QTY |
|----------------------|---------------|--|-----------|-----|
| 709 620 | 19A 19FPSBM1U | 19" Front Plate - Steel with Brush - Middle Opaning 1U | 1.2mm | 01 |



:: 19" FRONT PLATE - STEEL WITH BRUSH - SIDE OPANING

| ORDER NO RAL 9005 | TYPE | DESCRIPTION | THICKNESS | QTY |
|----------------------|---------------|--|-----------|-----|
| 709 621 | 19A 19FPSBS1U | 19" Front Plate - Steel with Brush - Side Opaning 1U | 1.2mm | 01 |



:: 19" FRONT PLATE - STEEL WITH BRUSH & BACK WIRE GUILD

| ORDER NO RAL 9005 | TYPE | DESCRIPTION | THICKNESS | QTY |
|----------------------|---------------|---|-----------|-----|
| 709 622 | 19A 19FPSBW1U | 19" Front Plate - Steel with Brush & Back Wire Guild 1U | 1.2mm | 01 |

RAL 9005 or any other color on request,subject to MOQ.

| | | | |
|-----------|------------|------------|------------|
| UPDATE ON | 21/03/2023 | REPLACE OF | 30/09/2022 |
|-----------|------------|------------|------------|