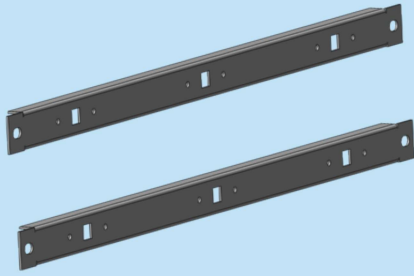
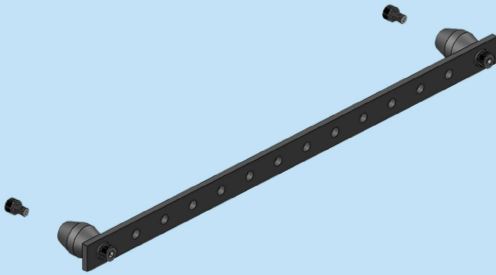


:: BACK FRAME ASSEMBLY RAILS



ORDER NO	TYPE	DESCRIPTION	DIMENSIONS (WxH)mm	THICKNESS	QTY
705 930	19ABFAR	Back Frame Assembly Rails, 19"	485x25	1.5mm	01

:: EARTH BAR ASSEMBLY



ORDER NO	TYPE	DESCRIPTION	DIMENSIONS (WxH)mm	QTY
705 931	19AEBA	Earth Bar Assembly 12 Holes x Dia9mm, 19"	25x5mm	01

Earth Bar Assembly Rails can be fixed to standard Free Standing & Wall Mounting 19" Rack too.