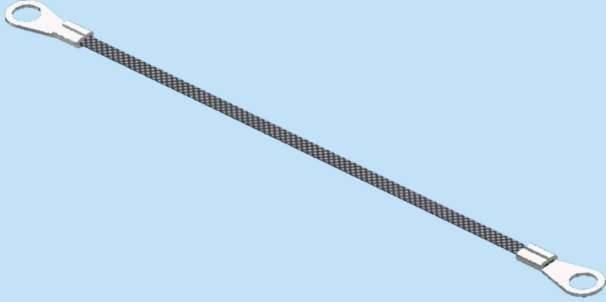
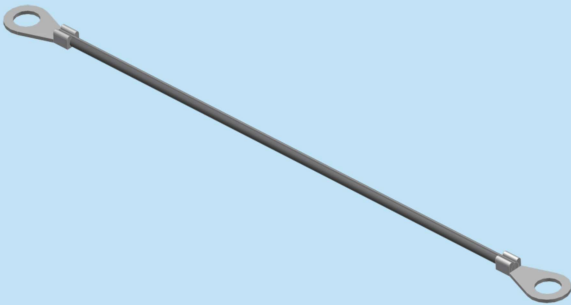


:: EARTHING BRAID



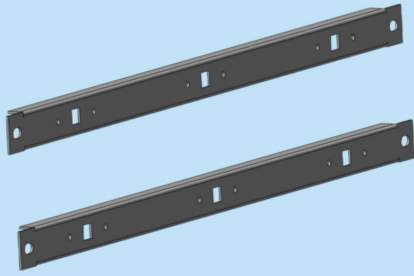
ORDER NO RAL 9005	TYPE	DESCRIPTION	LENGTH (L)mm	CROSS SEC. mm	QTY
780 672	19A EB2.5	Earth Braid 2.5	175mm	2.5	01
780 674	19A EB4	Earth Braid 4	175mm	4.0	01
780 676	19A EB6	Earth Braid 6	175mm	6.0	01

:: EARTHING CABLE



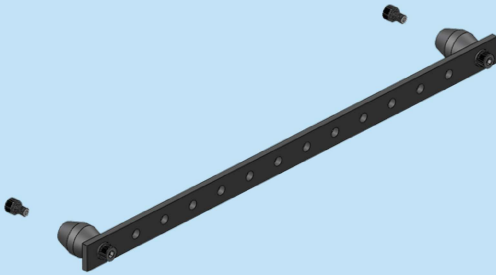
ORDER NO RAL 9005	TYPE	DESCRIPTION	LENGTH (L)mm	CROSS SEC. mm	QTY
780 632	19A EC2.5	Earth Cable 2.5	175mm	2.5	01
780 634	19A EC4	Earth Cable 4	175mm	4.0	01
780 636	19A EC6	Earth Cable 6	175mm	6.0	01

:: BACK FRAME ASSEMBLY RAILS



ORDER NO	TYPE	DESCRIPTION	DIMENSIONS (WxH)mm	THICKNESS	QTY
705 930	19ABFAR	Back Frame Assembly Rails, 19"	485x25	1.5mm	01

:: EARTH BAR ASSEMBLY



ORDER NO	TYPE	DESCRIPTION	DIMENSIONS (WxH)mm	QTY
705 931	19AEBA	Earth Bar Assembly 12 Holes x Dia9mm, 19"	25x5mm	01

Earth Bar Assembly Rails can be fixed to standard Free Standing & Wall Mounting 19" Rack too.