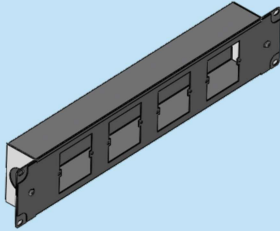
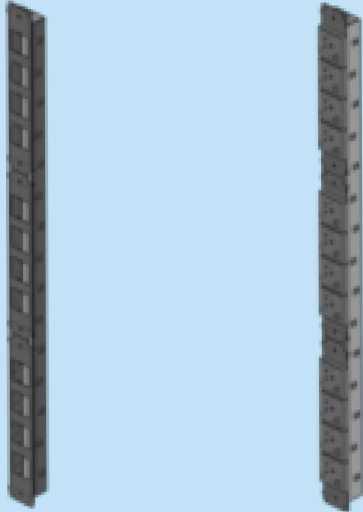


:: POWER PANEL - RACK MOUNT



| ORDER NO RAL 9005 | TYPE | DESCRIPTION | DIMENSIONS (W)xUmm | THICKNESS | QTY |
|----------------------|----------------|---|-----------------------|-----------|--------|
| 709 951 | 19A 19RMPP4 | Power Panel-Rack Mount-4 way-No S/O | 480x2U | 1.2mm | 01 Set |
| 709 953 | 19A 19RMPP4SO | Power Panel-Rack Mount-4 way-with 13/A S/O | 480x2U | 1.2mm | 01 Set |
| 709 954 | 19A 19RMPP4SOI | Power Panel-Rack Mount-4 way-with 13/A S/O Indicator type | 480x2U | 1.2mm | 01 Set |

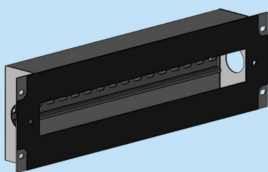
:: POWER PANEL - VERTICAL MOUNT



| ORDER NO RAL 9005 | TYPE | DESCRIPTION | DIMENSIONS (U) | THICKNESS | QTY |
|----------------------|---------------|---|-------------------|-----------|-----|
| 709 913 | 19A PPV31U | Power Panel - Vertical Mount - 8 way - No S/O | 31U | 1.2mm | 01 |
| 709 912 | 19A PPV36U | Power Panel - Vertical Mount - 12 way - No S/O | 36U | 1.2mm | 01 |
| 709 914 | 19A PPV40U | Power Panel - Vertical Mount - 12 way - No S/O | 40U | 1.2mm | 01 |
| 709 911 | 19A PPV42U | Power Panel - Vertical Mount - 12 way - No S/O | 42U | 1.2mm | 01 |
| 709 910 | 19A PPV45U | Power Panel - Vertical Mount - 16 way - No S/O | 45U | 1.2mm | 01 |
| 709 915 | 19A PPV50U | Power Panel - Vertical Mount - 16 way - No S/O | 50U | 1.2mm | 01 |
| 707 938 | 19A PPV31USO | Power Panel - Vertical Mount - 8 way - with 13A S/O | 31U | 1.2mm | 01 |
| 707 939 | 19A PPV36USO | Power Panel - Vertical Mount - 12 way - with 13A S/O | 36U | 1.2mm | 01 |
| 707 940 | 19A PPV40USO | Power Panel - Vertical Mount - 12 way - with 13A S/O | 40U | 1.2mm | 01 |
| 707 941 | 19A PPV42USO | Power Panel - Vertical Mount - 12 way - with 13A S/O | 42U | 1.2mm | 01 |
| 707 942 | 19A PPV45USO | Power Panel - Vertical Mount - 16 way - with 13A S/O | 45U | 1.2mm | 01 |
| 707 943 | 19A PPV50USO | Power Panel - Vertical Mount - 16 way - with 13A S/O | 50U | 1.2mm | 01 |
| 707 948 | 19A PPV31USOI | Power Panel-Vertical Mount-8 way-with 13A S/O Indicator Type | 31U | 1.2mm | 01 |
| 707 949 | 19A PPV36USOI | Power Panel-Vertical Mount-12 way-with 13A S/O Indicator Type | 36U | 1.2mm | 01 |
| 707 950 | 19A PPV40USOI | Power Panel-Vertical Mount-12 way-with 13A S/O Indicator Type | 40U | 1.2mm | 01 |
| 707 951 | 19A PPV42USOI | Power Panel-Vertical Mount-12 way-with 13A S/O Indicator Type | 42U | 1.2mm | 01 |
| 707 952 | 19A PPV45USOI | Power Panel-Vertical Mount-16 way-with 13A S/O Indicator Type | 45U | 1.2mm | 01 |
| 707 953 | 19A PPV50USOI | Power Panel-Vertical Mount-16 way-with 13A S/O Indicator Type | 50U | 1.2mm | 01 |

Power Panel cutout opening as per electrical standards of different countries are available on request.

:: POWER DISTRIBUTION MODULE RACK



| ORDER NO RAL 9005 | TYPE | DESCRIPTION | DIMENSIONS (W)xU | THICKNESS | QTY |
|----------------------|---------|--|---------------------|-----------|-----|
| 709 815 | 19A PDM | Power Distribution Module Rack Mount with DIN Rail | 480x2U | 1.2mm | 01 |

RAL 9005 or any other color on request,subject to MOQ.

| | | | |
|-----------|------------|------------|------------|
| UPDATE ON | 21/03/2023 | REPLACE OF | 30/09/2022 |
|-----------|------------|------------|------------|