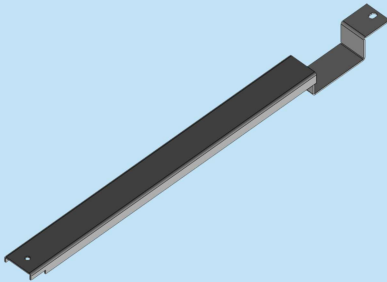


:: PDU MOUNTING PROFILE - VERTICAL



ORDER NO RAL 9005	TYPE	DESCRIPTION	DIMENSIONS (U)	THICKNESS	QTY
709 883	19A PDUMV31U	FS Rack PDU Mounting Profile - Vertical	31U	1.2mm	01 Set
709 884	19A PDUMV36U	FS Rack PDU Mounting Profile - Vertical	36U	1.2mm	01 Set
709 885	19A PDUMV40U	FS Rack PDU Mounting Profile - Vertical	40U	1.2mm	01 Set
709 886	19A PDUMV42U	FS Rack PDU Mounting Profile - Vertical	42U	1.2mm	01 Set
709 887	19A PDUMV45U	FS Rack PDU Mounting Profile - Vertical	45U	1.2mm	01 Set
709 888	19A PDUMV50U	FS Rack PDU Mounting Profile - Vertical	50U	1.2mm	01 Set

:: PDU MOUNTING PROFILE - HORIZONTAL



ORDER NO RAL 9005	TYPE	DESCRIPTION	DIMENSIONS (W)mm	THICKNESS	QTY
709 876	19A PDUMH6	FS Rack PDU Mounting profile - Horizontal	600mm	2.0mm	01 Set
709 877	19A PDUMH8	FS Rack PDU Mounting profile - Horizontal	800mm	2.0mm	01 Set
709 878	19A PDUMH10	FS Rack PDU Mounting profile - Horizontal	1000mm	2.0mm	01 Set
709 878	19A PDUMH12	FS Rack PDU Mounting profile - Horizontal	1200mm	2.0mm	01 Set

:: 19" DATCET SERVER RACK PDU MOUNTING PROFILE



ORDER NO RAL 9005	TYPE	DESCRIPTION	DIMENSIONS (U)	THICKNESS	QTY
710 120	19A DCPDUMS42	19" DATCET Server Rack PDU Mounting Profile Single	42U	1.2mm	01 Set
710 122	19A DCPDUMS45	19" DATCET Server Rack PDU Mounting Profile Single	45U	1.2mm	01 Set
710 124	19A DCPDUMS50	19" DATCET Server Rack PDU Mounting Profile Single	50U	1.2mm	01 Set
710 130	19A DCPDUMD42	19" DATCET Server Rack PDU Mounting Profile Dual	42U	1.2mm	01 Set
710 132	19A DCPDUMD45	19" DATCET Server Rack PDU Mounting Profile Dual	45U	1.2mm	01 Set
710 134	19A DCPDUMD50	19" DATCET Server Rack PDU Mounting Profile Dual	50U	1.2mm	01 Set

RAL 9005 or any other color on request, subject to MOQ.

UPDATE ON	31/08/2023	REPLACE OF	21/03/2023
-----------	------------	------------	------------