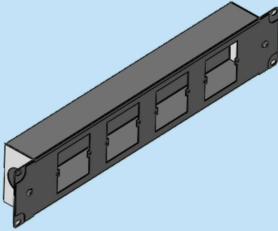
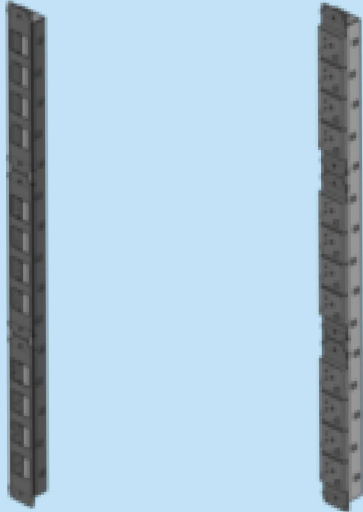


:: POWER PANEL - RACK MOUNT



ORDER NO RAL 9005	TYPE	DESCRIPTION	DIMENSIONS (W)xUmm	THICKNESS	QTY
709 951	19A 19RMPP4	Power Panel-Rack Mount-4 way-No S/O	480x2U	1.2mm	01 Set
709 953	19A 19RMPP4SO	Power Panel-Rack Mount-4 way-with 13/A S/O	480x2U	1.2mm	01 Set
709 954	19A 19RMPP4SOI	Power Panel-Rack Mount-4 way-with 13/A S/O Indicator type	480x2U	1.2mm	01 Set

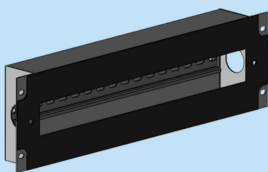
:: POWER PANEL - VERTICAL MOUNT



ORDER NO RAL 9005	TYPE	DESCRIPTION	DIMENSIONS (U)	THICKNESS	QTY
709 913	19A PPV31U	Power Panel - Vertical Mount - 8 way - No S/O	31U	1.2mm	01
709 912	19A PPV36U	Power Panel - Vertical Mount - 12 way - No S/O	36U	1.2mm	01
709 914	19A PPV40U	Power Panel - Vertical Mount - 12 way - No S/O	40U	1.2mm	01
709 911	19A PPV42U	Power Panel - Vertical Mount - 12 way - No S/O	42U	1.2mm	01
709 910	19A PPV45U	Power Panel - Vertical Mount - 16 way - No S/O	45U	1.2mm	01
709 915	19A PPV50U	Power Panel - Vertical Mount - 16 way - No S/O	50U	1.2mm	01
707 938	19A PPV31USO	Power Panel - Vertical Mount - 8 way - with 13A S/O	31U	1.2mm	01
707 939	19A PPV36USO	Power Panel - Vertical Mount - 12 way - with 13A S/O	36U	1.2mm	01
707 940	19A PPV40USO	Power Panel - Vertical Mount - 12 way - with 13A S/O	40U	1.2mm	01
707 941	19A PPV42USO	Power Panel - Vertical Mount - 12 way - with 13A S/O	42U	1.2mm	01
707 942	19A PPV45USO	Power Panel - Vertical Mount - 16 way - with 13A S/O	45U	1.2mm	01
707 943	19A PPV50USO	Power Panel - Vertical Mount - 16 way - with 13A S/O	50U	1.2mm	01
707 948	19A PPV31USOI	Power Panel-Vertical Mount-8 way-with 13A S/O Indicator Type	31U	1.2mm	01
707 949	19A PPV36USOI	Power Panel-Vertical Mount-12 way-with 13A S/O Indicator Type	36U	1.2mm	01
707 950	19A PPV40USOI	Power Panel-Vertical Mount-12 way-with 13A S/O Indicator Type	40U	1.2mm	01
707 951	19A PPV42USOI	Power Panel-Vertical Mount-12 way-with 13A S/O Indicator Type	42U	1.2mm	01
707 952	19A PPV45USOI	Power Panel-Vertical Mount-16 way-with 13A S/O Indicator Type	45U	1.2mm	01
707 953	19A PPV50USOI	Power Panel-Vertical Mount-16 way-with 13A S/O Indicator Type	50U	1.2mm	01

Power Panel cutout opening as per electrical standards of different countries are available on request.

:: POWER DISTRIBUTION MODULE RACK



ORDER NO RAL 9005	TYPE	DESCRIPTION	DIMENSIONS (W)xU	THICKNESS	QTY
709 815	19A PDM	Power Distribution Module Rack Mount with DIN Rail	480x2U	1.2mm	01

RAL 9005 or any other color on request,subject to MOQ.

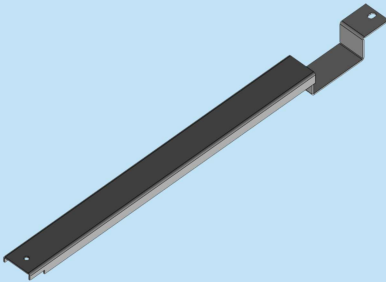
UPDATE ON	21/03/2023	REPLACE OF	30/09/2022
-----------	------------	------------	------------

:: PDU MOUNTING PROFILE - VERTICAL



ORDER NO RAL 9005	TYPE	DESCRIPTION	DIMENSIONS (U)	THICKNESS	QTY
709 883	19A PDUMV31U	FS Rack PDU Mounting Profile - Vertical	31U	1.2mm	01 Set
709 884	19A PDUMV36U	FS Rack PDU Mounting Profile - Vertical	36U	1.2mm	01 Set
709 885	19A PDUMV40U	FS Rack PDU Mounting Profile - Vertical	40U	1.2mm	01 Set
709 886	19A PDUMV42U	FS Rack PDU Mounting Profile - Vertical	42U	1.2mm	01 Set
709 887	19A PDUMV45U	FS Rack PDU Mounting Profile - Vertical	45U	1.2mm	01 Set
709 888	19A PDUMV50U	FS Rack PDU Mounting Profile - Vertical	50U	1.2mm	01 Set

:: PDU MOUNTING PROFILE - HORIZONTAL



ORDER NO RAL 9005	TYPE	DESCRIPTION	DIMENSIONS (W)mm	THICKNESS	QTY
709 876	19A PDUMH6	FS Rack PDU Mounting profile - Horizontal	600mm	2.0mm	01 Set
709 877	19A PDUMH8	FS Rack PDU Mounting profile - Horizontal	800mm	2.0mm	01 Set
709 878	19A PDUMH10	FS Rack PDU Mounting profile - Horizontal	1000mm	2.0mm	01 Set
709 878	19A PDUMH12	FS Rack PDU Mounting profile - Horizontal	1200mm	2.0mm	01 Set

:: 19" DATCET SERVER RACK PDU MOUNTING PROFILE



ORDER NO RAL 9005	TYPE	DESCRIPTION	DIMENSIONS (U)	THICKNESS	QTY
710 120	19A DCPDUMS42	19" DATCET Server Rack PDU Mounting Profile Single	42U	1.2mm	01 Set
710 122	19A DCPDUMS45	19" DATCET Server Rack PDU Mounting Profile Single	45U	1.2mm	01 Set
710 124	19A DCPDUMS50	19" DATCET Server Rack PDU Mounting Profile Single	50U	1.2mm	01 Set
710 130	19A DCPDUMD42	19" DATCET Server Rack PDU Mounting Profile Dual	42U	1.2mm	01 Set
710 132	19A DCPDUMD45	19" DATCET Server Rack PDU Mounting Profile Dual	45U	1.2mm	01 Set
710 134	19A DCPDUMD50	19" DATCET Server Rack PDU Mounting Profile Dual	50U	1.2mm	01 Set

RAL 9005 or any other color on request, subject to MOQ.

UPDATE ON	31/08/2023	REPLACE OF	21/03/2023
-----------	------------	------------	------------